

## **PACKAGED BDD**



# PROJECT APPROACH

## Purpose of the BDD

---

Those are the intent of the BDD. When you would like to grow your corporation. It is better to get the BDD regularly.

1. Understanding the business, future potential, synergy effects, and risks  
Assessing synergy effects and other factors is necessary to understand how to proceed after M&A and the degree to which M&A is necessary.
2. Revise valuations  
Consider whether the acquisition price is appropriate by comparing the original plan with the internal and external situation.
3. Revise and develop business strategies and plans.  
Refine strategies for expanding sales channels, building production systems, etc., based on the impact of the acquisition on the target company.

# PROJECT APPROACH

## Output Image

---

Those are the output images of the Packaged BDD of SASAL.

No	Subtitle	Details
1	Executive Summary	Summary of the BDD Document.
2	PEST ANALYSIS	A framework for understanding and predicting how the external environment surrounding your company will affect you now or in the future.
3	BUSINESS MODEL CAMPUS	It organises and visually represents complex business structures in an easy-to-understand manner, allowing you to identify what value propositions to offer to which customers, in which mediums and channels, and how to generate revenue.
4	FIVE FORCE ANALYSIS	This framework identifies the situation and profit structure of each competitor and the industry as a whole, and analyses the company's ability to make a profit in this context.
5	VRIO ANALYSIS	A framework used to understand the company's competitive advantage and economic resources.
6	SUPPLY CHAIN	The system by which goods and services are delivered to end-users through the procurement of raw materials, production, distribution and sales.
7	VALUE CHAIN	It is a concept that grasps each business activity in an enterprise as a series of value-creating flows.

---

# PROJECT APPROACH

## COST

The following are our estimates. We hope you will choose the most suitable method according to your staff's work priorities and budgetary constraints.

No	Type	Cost	
		PACKAGE	CUSTOMIZE
1	Cost	\$ 30,000 - +Tax	From \$ 100,000 - +Tax
2	Contents	Deliver a BDD packaged by SASAL	SASAL provides the contents with customized.
3	Recommendation	<ul style="list-style-type: none"> <li>Companies wishing to start BDD at a low cost</li> <li>Companies requesting BDD from us for the first time</li> </ul>	<ul style="list-style-type: none"> <li>Companies wishing to customize and carry out BDD</li> <li>Companies that want to proceed with a thorough understanding of what is involved.</li> </ul>
4	Days of delivery	1.5 Month	2 Month
5	MTG	-	Per one week

### Information

- Payment is due at the end of the month following the start of the contract. The total project cost divided by the project duration is payable monthly. If additional requirements arise during the project, they will be started after the contract is signed and will be added to the next invoice.
- The output will be submitted in our format. There is no problem to use the material within your business for the purpose of promoting your business.

# PROJECT APPROACH SUMMARY – No1

**Confidential**  
SASAL, INC

---

XXX

	<b>Commercial DD</b>	<b>Operational DD</b>
OUTLINE		
ISSUE		
Contents		
Approach		

# PROJECT APPROACH SUMMARY – No2

**Confidential**  
SASAL, INC

XXX

	<b>Commercial DD</b>	<b>Operational DD</b>
OUTLINE		
ISSUE		
Contents		
Approach		

# PROJECT APPROACH SUMMARY – No3

**Confidential**  
SASAL, INC

XXX

<b>Title</b>	<b>Details</b>
CXO	
ITDD	
Governance	
Human Resource	
Sustainability	

# PROJECT APPROACH

## PEST ANALYSIS

---

**Confidential**  
SASAL, INC

XXX

Politics

Economy

Society

Technology



# PROJECT APPROACH

## BUSINESS MODEL CAMPUS

**Confidential**  
SASAL, INC

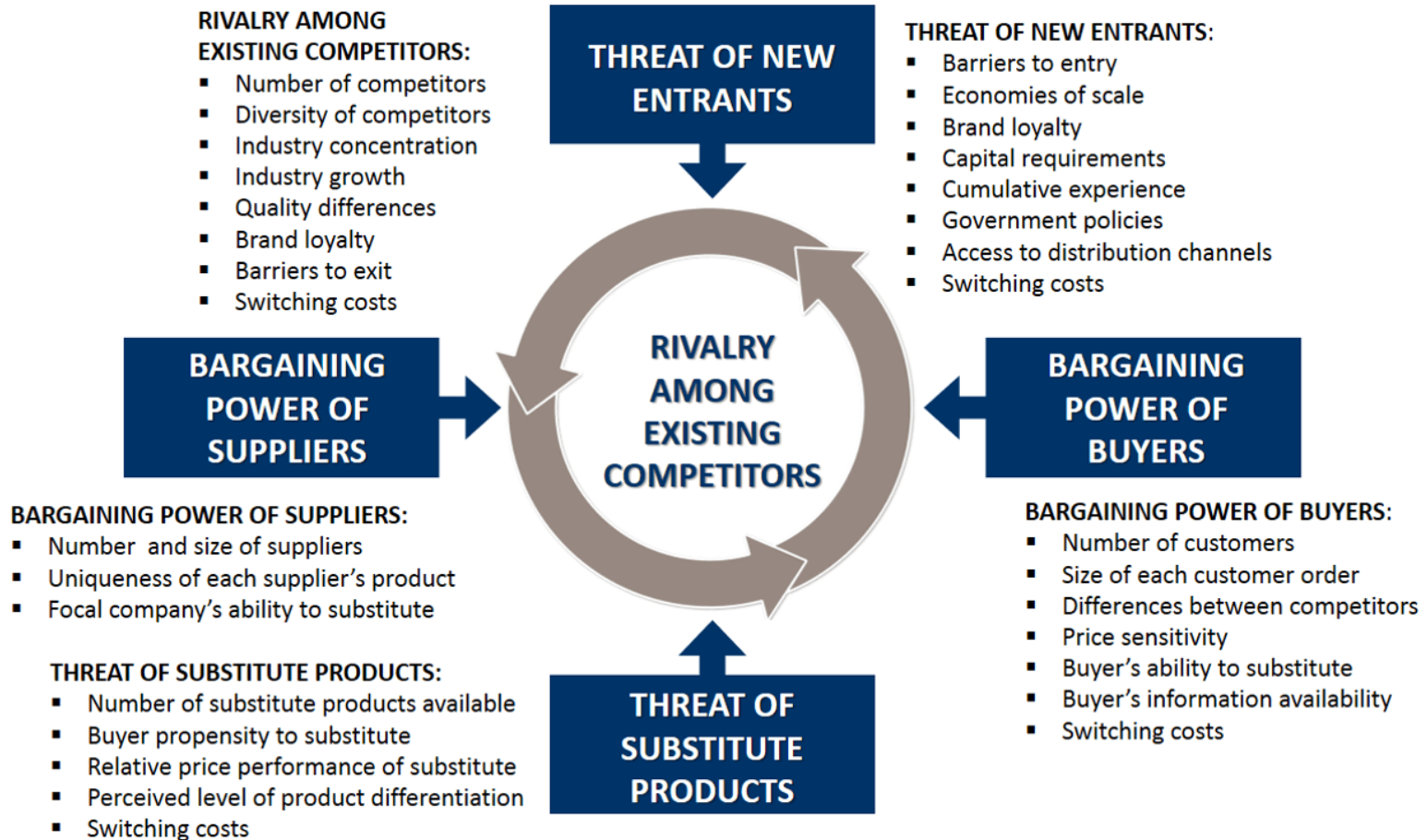
XXX

Partner	Activity	Value Proposition	Customer Relationship	Customer Segment
	Resource		Channel	
Cost Structure			Revenue Stream	

# PROJECT APPROACH

## FIVE FORCE ANALYSIS

XXX



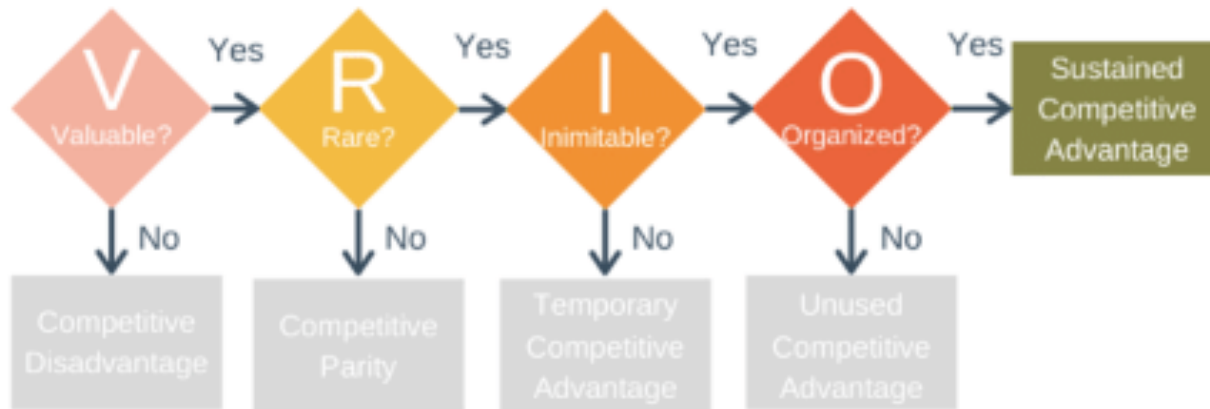
# PROJECT APPROACH

## VRIO

Confidential  
SASAL, INC

XXX

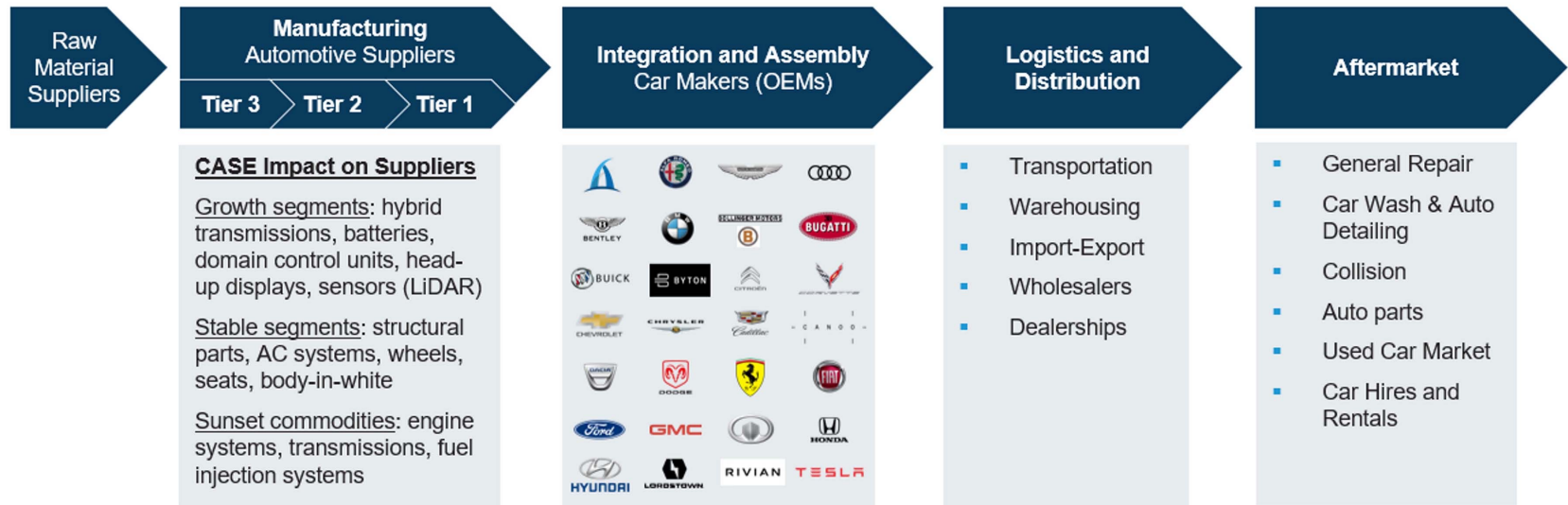
### VRIO Framework Process



# PROJECT APPROACH

## SUPPLY CHAIN

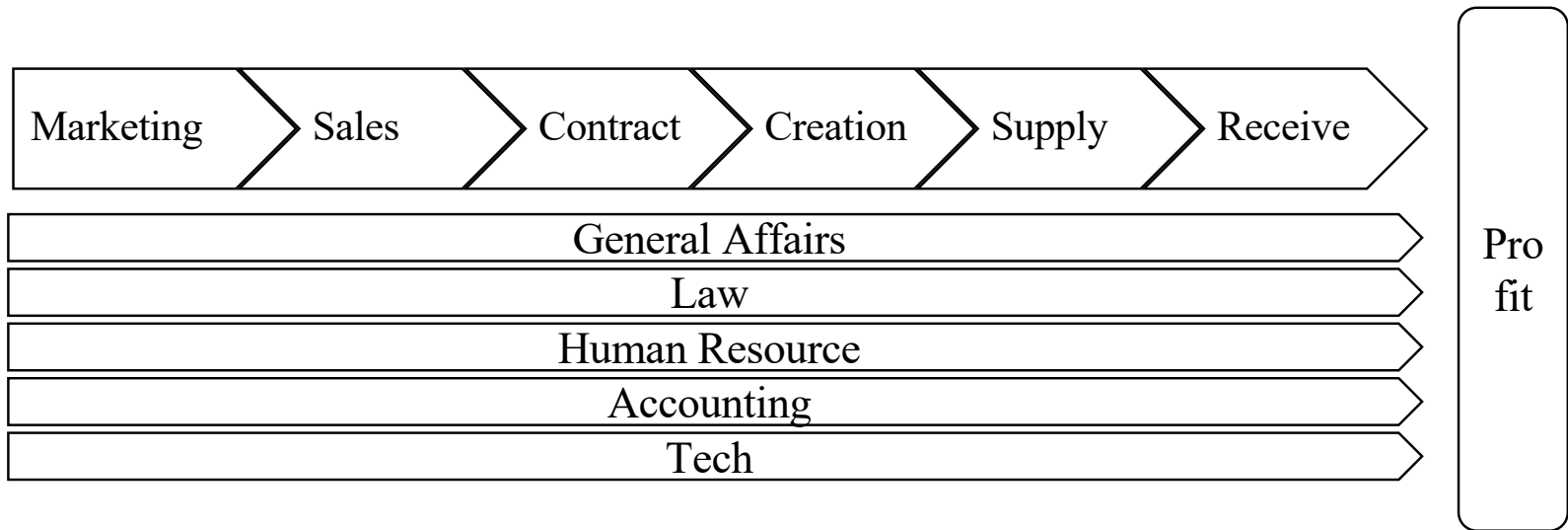
XXX



# PROJECT APPROACH VALUE CHAIN

Confidential  
SASAL, INC

XXX



SASAL, INC is a strategic consulting firm founded in 2022. The firm is headquartered in New York, USA, and has a subsidiary in Tokyo, Japan.

### Overview

Company Name	SASAL, Inc
Representative	Yurino Sakamoto
Build	October 2022
Business	Strategy Consulting Company
Address	Headquarter 136 Madison Avenue, New York, NY 10016
Address	Subsidiary Akasaka Front Town 3F, 4-8-19 Akasaka, Minato-ku, Tokyo, Japan, 107-0052
Employee	<u>10 (Subcontract Included)</u>
Web Site	<a href="https://sasalinc.com/">https://sasalinc.com/</a>
Contact	<a href="https://sasalinc.com/contact/">https://sasalinc.com/contact/</a>
History	<ul style="list-style-type: none"><li>10/2022 SASAL, Inc. Established in Japan.</li><li>07/2023 SASAL, Inc. Established in the US.</li></ul>

### Management Philosophy

<b>Values</b>	As a specialist, deepen human attractiveness through communication.
<b>Vision</b>	Contribute as one company that supports the wealth of countries around the world.
<b>Mission</b>	Increase your company's "Future value".



# SERVICE

## Service

Confidential

SASAL, INC

The following are our services. We recommend Project for clients who want full-scale strategic consulting, and Person for clients who want a Small Start from a cost perspective.

Title	PROJECT
Contents	As a strategic consulting firm, we perform project work. We provide self-driven strategic consulting services as a team. Meetings are set up according to the client's needs.
Cost	\$100,000 – \$1,000,000 / Project
Team	3 months / 6 months / 12 months etc.,
ATTENTION	The maximum term of one contract is 12 months. If you wish to extend your contract, please contact SASAL, INC prior to the end of your contract.



CONTACT

## Competitive Information

Those are the competitive information. When you try the consulting firm, it's better for you to use our corporation as soon as possible.

		<b>Small Firm</b>	<b>SASAL, INC</b>	<b>Tier Firm</b>
<b>Feature</b>		Operation is local. Hence you would like to ask global job you couldn't.	Operation is global, and the cost is low; therefore, it is recommended that the client, who has never used the strategy consulting firm,	Operated globally, and there are name values, but the project speed is slow.
<b>Valuation</b>	<b>Cost</b> ( /Project)	~ \$100,000	\$100,000 – \$1,000,000	\$1,000,000 ~
	<b>Flexibility</b>	△	○	△
	<b>Term for Achievement</b>	◎	○	△
	<b>Name Value</b>	△	○	◎



### Past Case

Those are the past cases of SASAL, INC. When you would like to read the information about sector please read this document.

No	Sector	Title	Contents	Client	Region
1	Technology	Global Market Research	Market research in Europe, North America, Asia and Australia	NYSE	Japan
2	Health Care	DX Strategy Consulting	System Migration of B2C application	Public Sector	Japan
3	Financials	New business development	BDD for Business Partnership	NYSE	Japan
4	Real Estate	-	-	-	-
5	Energy	New business development	Basic Business model research of the US Energy Industry	NYSE	Japan
6	Materials	-	-	-	-
7	Consumer Discretionary	-	-	-	-
8	Industrials	New business development	Business Model Reconsider and BDD for Business Partnership	NYSE	Japan
9	Utilities	Global Market Research	Market research in Europe, North America, Asia and Australia	NYSE	Japan
10	Consumer Staples	Whole Strategy	Human Resources, IT, Accounting, Business Consulting	Start-up	United States
11	Consumer Discretionary	Globally Industry Research	Globally Industry Research based on each company e.g. US, Europe	TYO	Japan

Those are the Sector details there are 11 Sector in the world.

Sector	Sector Detail
Energy	Energy Sector comprises companies engaged in exploration & production, refining & marketing, and storage & transportation of oil & gas and coal & consumable fuels. It also includes companies that offer oil & gas equipment and services.
Materials	The Materials Sector includes companies that manufacture chemicals, construction materials, forest products, glass, paper and related packaging products, and metals, minerals and mining companies, including producers of steel.
Industrials	The Industrials Sector includes manufacturers and distributors of capital goods such as aerospace & defense, building products, electrical equipment and machinery and companies that offer construction & engineering services. It also includes providers of commercial & professional services including printing, environmental and facilities services, office services & supplies, security & alarm services, human resource & employment services, research & consulting services. It also includes companies that provide transportation services.
Consumer Discretionary	The Consumer Discretionary Sector encompasses those businesses that tend to be the most sensitive to economic cycles. Its manufacturing segment includes automobiles & components, household durable goods, leisure products and textiles & apparel. The services segment includes hotels, restaurants, and other leisure facilities. It also includes distributors and retailers of consumer discretionary products.
Consumer Staples	The Consumer Staples Sector comprises companies whose businesses are less sensitive to economic cycles. It includes manufacturers and distributors of food, beverages and tobacco and producers of non-durable household goods and personal products. It also includes distributors and retailers of consumer staples products including food & drug retailing companies.
Health Care	The Health Care Sector includes health care providers & services, companies that manufacture and distribute health care equipment & supplies, and health care technology companies. It also includes companies involved in the research, development, production and marketing of pharmaceuticals and biotechnology products.

Those are the Sector details there are 11 Sector in the world.

Sector	Sector Detail
Financials	The Financials Sector contains companies engaged in banking, financial services, consumer finance, capital markets and insurance activities. It also includes Financial Exchanges & Data and Mortgage REITs.
Information Technology	The Information Technology Sector comprises companies that offer software and information technology services, manufacturers and distributors of technology hardware & equipment such as communications equipment, cellular phones, computers & peripherals, electronic equipment and related instruments, and semiconductors and related equipment & materials.
Communication Services	The Communication Services Sector includes companies that facilitate communication and offer related content and information through various mediums. It includes telecom and media & entertainment companies including producers of interactive gaming products and companies engaged in content and information creation or distribution through proprietary platforms.
Utilities	The Utilities Sector comprises utility companies such as electric, gas and water utilities. It also includes independent power producers & energy traders and companies that engage in generation and distribution of electricity using renewable sources.
Real Estate	The Real Estate Sector contains companies engaged in real estate development and operation. It also includes companies offering real estate related services and Equity Real Estate Investment Trusts (REITs).

**SASAL, INC.**

**Confidential**

**SASAL, INC**

**If you have questions, please get in touch with us.**

**<https://www.sasalinc.com/contact>**

**Thank you for reading this document.**